

MONTHLY MEMBERSHIP PROGRESS REPORT

LOCATION ARKANSAS

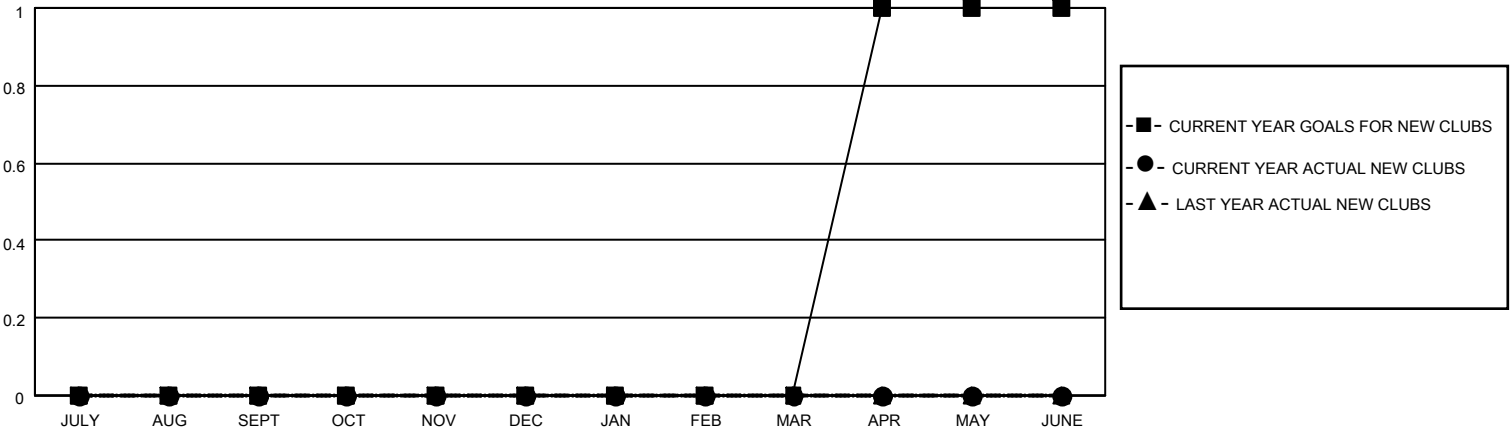
District 7 I

Results as of: 6/30/2021

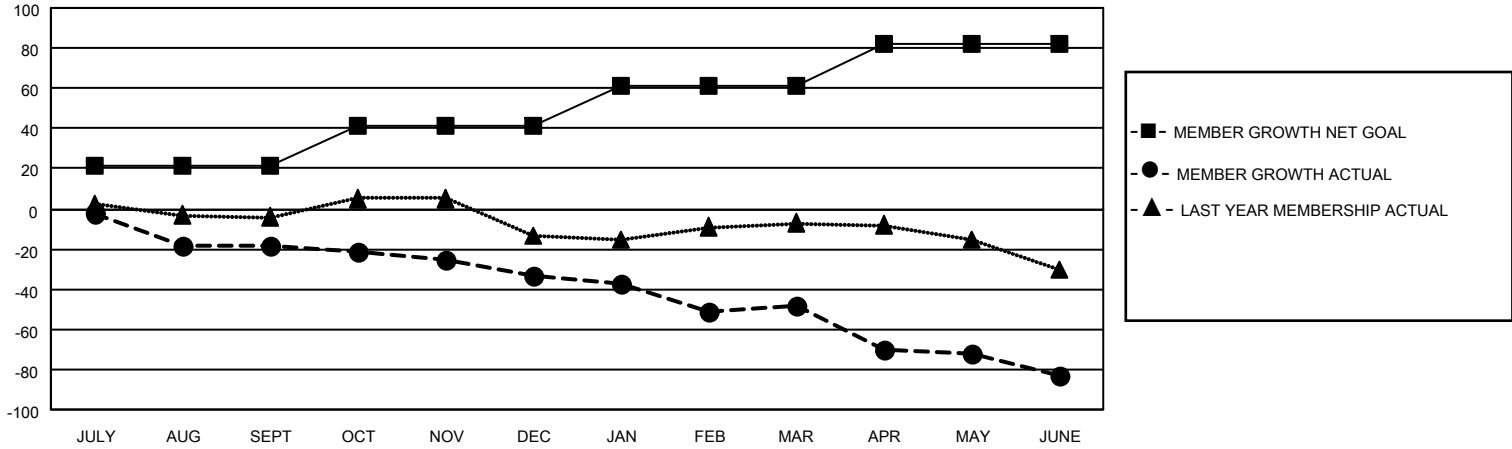
Clubs			
RESULTS FOR 2020-2021			
QUARTER	NEW CLUB GOAL	NEW CLUBS	DROPPED CLUBS
JULY/AUG/SEPT	0	0	0
OCT/NOV/DEC	0	0	0
JAN/FEB/MAR	0	0	0
APR/MAY/JUNE	1	0	0

Members			
RESULTS FOR 2020-2021			
QUARTER	MEMBER GROWTH NET GOAL	MEMBER GROWTH ACTUAL	DROPPED MEMBERS ACTUAL (including transfers)
JULY/AUG/SEPT	21	8	24
OCT/NOV/DEC	20	7	22
JAN/FEB/MAR	20	18	32
APR/MAY/JUNE	21	9	42

GOALS AND ACTUAL NEW CLUBS CUMULATIVE



GOALS AND ACTUAL MEMBERS CUMULATIVE



DROPPED CLUBS: 0	18 CLUBS OF 31 ADDED 1 OR MORE NEW MEMBERS	<u>GENDER DISTRIBUTION</u> MALE 422 (66.67%) FEMALE 211 (33.33%)
<u>DROPPED MEMBERS</u> DECEASED 18 CLUB CANCELLED 0 OTHER 102 <hr/> TOTAL 120	CLICK HERE FOR CUMULATIVE MEMBERSHIP DATA	TOTAL FAMILY UNIT MEMBERS 79 FAMILY MEMBERS PAYING HALF DUES 40